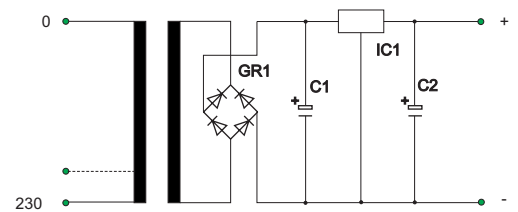
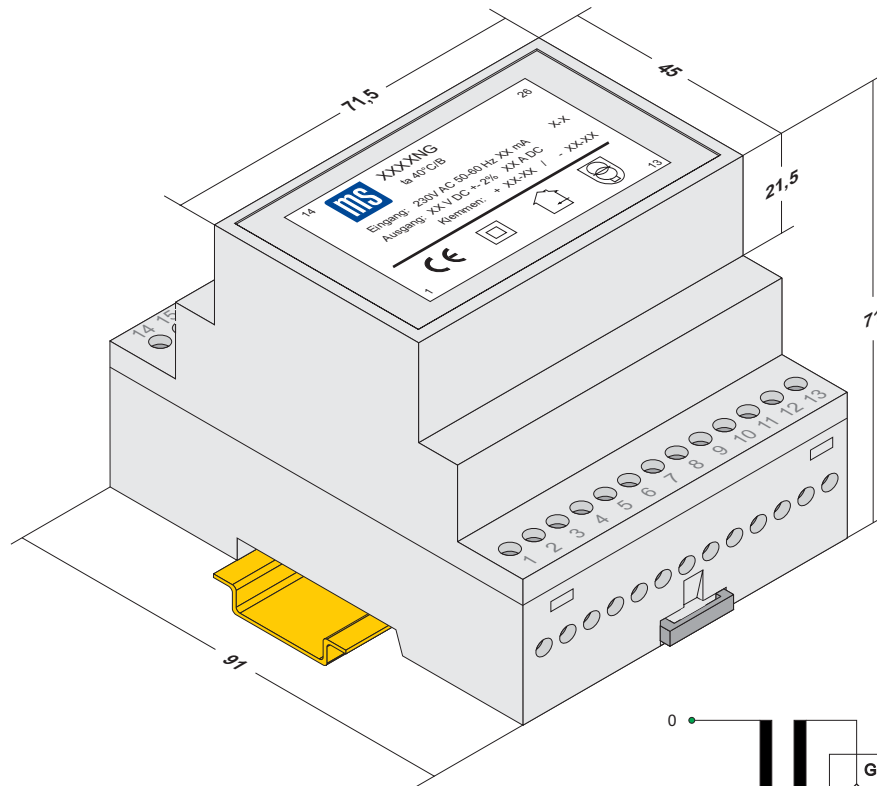


built-in power supply for cup track TS 35 2 ... 7,5 W



schematic

RNG	order-nr	input	tapping	power / voltage / current	
	MS4569NG	230V	keine	7,5W	24,0VDC/0,31ADC
	MS4570NG	230V	keine	7,2W	12,0VDC/0,60ADC
	MS4571NG	230V	keine	5,0W	5,0VDC/1,00ADC
	MS4528NG	230V	200 V	2,0W	3,5VDC/0,60ADC

technical datas:

input-voltage/voltage-tolerance:

or

output-tolerance:

230 V / 50 - 60 Hz \pm 10%

other voltage on demand

\pm 2%

output-ripple:

characteristic:

ambient temperature:

protection-class:

short-circuit-proof protection:

safety standards:

max. 2,5 mV_{ss}

controlled, short-circuit-proof

0 - +40°C

II / IP00

primary temperature-protection

EN 60742 (VDE 0551), DIN 19240